

From the desk of Amy Ho

For RENT: Prime 16-Storey Office Building in Subang Jaya, Selangor

Asking Rental : MYR 3.80/ ft².
Sizes : from 2,000 ft². – 10,676 ft².
Address : Persiaran Kewajipan, USJ 1, 47600 Subang Jaya, Selangor

Discover Menara HeiTech Village, a standout 16-storey office building strategically located in the bustling USJ1 area of Subang Jaya. With its prime location, this exceptional property offers:

Convenient Access to Transport:

South Quay BRT Station : 350m away, 4-minute walk
USJ 7 LRT & BRT Station: 950m away, 12-minute walk

Nearby Amenities:

The Summit Shopping Mall: 450m, 7-minute walk
Da Men Mall : 650m, 9-minute walk

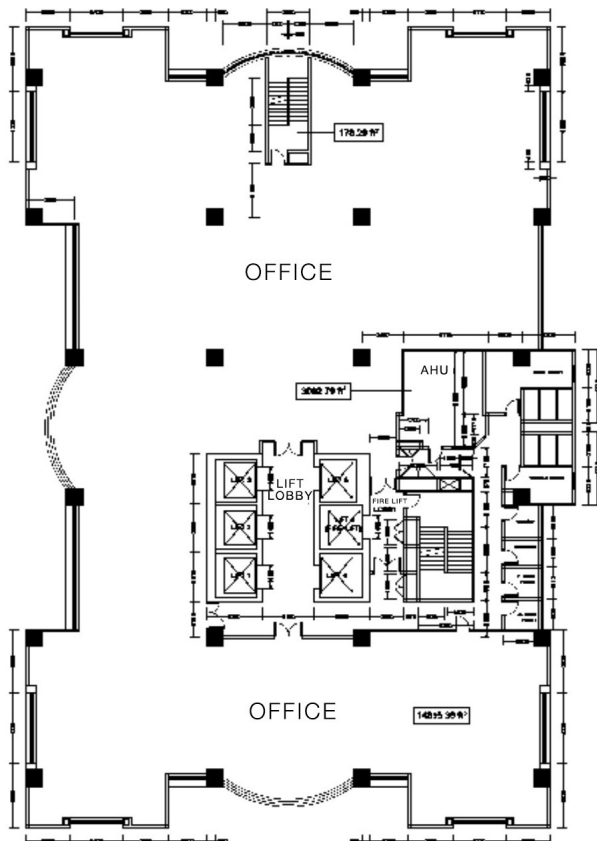
Contact Amy Ho @ +6012-3321188 to schedule a viewing today.

Floors available for Rent	Size feet ²	Rental Rate	Rental, MYR	Furnishing
Level 1	7,644	MYR 3.80	MYR 29,047	Bare
Level 5	10,491	MYR 3.80	MYR 39,866	Bare
Level 6	3,050	MYR 3.80	MYR 11,590	Partly Furnished
	3,525	MYR 3.80	MYR 13,395	Partly Furnished
	2,100	MYR 3.80	MYR 7,980	Bare
	2,000	MYR 3.80	MYR 7,600	Bare
Level 9	4,100	MYR 3.80	MYR 15,580	Bare
Level 10	6,460	MYR 3.80	MYR 24,548	Bare
	2,100	MYR 3.80	MYR 7,980	Bare
	2,000	MYR 3.80	MYR 7,600	Bare
Level 11	10,676	MYR 3.80	MYR 40,569	Bare
Level 13	9,155	MYR 3.80	MYR 34,789	Bare
Total Available Space	63,301			

From the desk of Amy Ho



From the desk of Amy Ho



TYPICAL FLOOR PLAN