

FOR RENT: PREMIUM CORPORATE OFFICE SPACE @ ETIQA TWINS, KLCC

Nestled in the dynamic heart of KL City Centre, ETIQA TWINS features two impressive 27-story towers: Tower 1 and Tower 2. With a sleek and sophisticated design, this property offers a 4-level Retail Podium Block and a convenient 5-level basement car park. Surrounded by iconic Kuala Lumpur landmarks including the KL Convention Centre, Impiana Hotel, Marc Service Residence, and One KL, the renowned Suria KLCC Mall is just a stone's throw away.

Public Transport Accessibility:

- 10-minute walk to KLCC LRT Station
- 10-minute walk to Raja Chulan Monorail Station
- 14-minute walk to Bukit Bintang MRT Station
- 1-minute walk to Green Line KL Free Bus Station

Seize the opportunity to secure premium office space in this sought-after location.

Contact Amy Ho @ +6012-332 1188 to schedule a viewing today!



AVAILABILITY & RENTAL RATES | FULLY FURNISHED UNITS

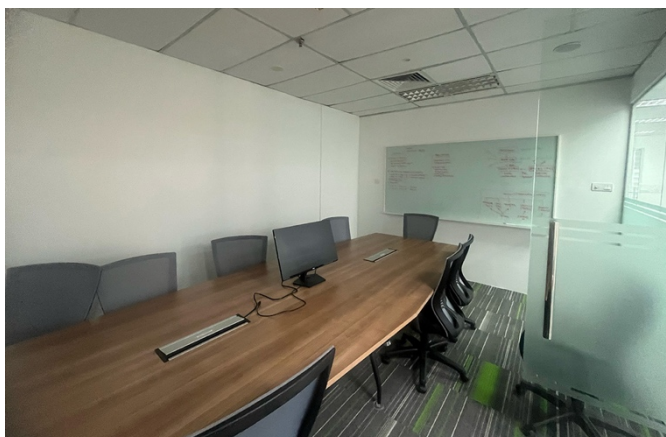
Unit No.	Unit Location	Size ft ²	Rate	Rental, MYR	Remarks
T2 - 8 B,C & D	Tower 2, 8 th Floor, Unit B, C & D	3,300	MYR 7.50	MYR 24,750	Available Oct-24
T2 - 8 E	Tower 2, 8 th Floor, Unit E	2,095	MYR 7.50	MYR 15,713	
T2 - 17	Tower 2, 17 th Floor	8,302	MYR 7.50	MYR 62,265	

Unit No. : Unit T2 - 8 B, C & D, 8th Floor, Tower 2

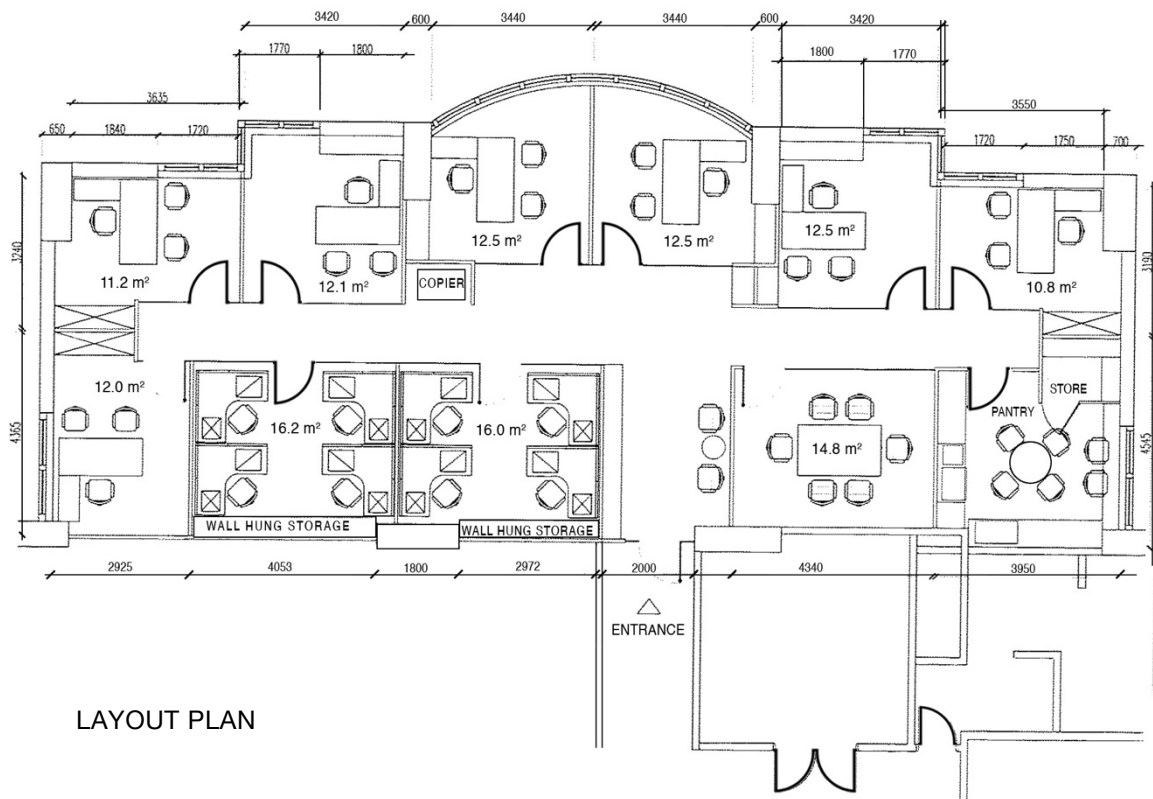
Size : 3,300 ft²

Rental : MYR 24,750 /month | MYR 7.50/ft²

Furnishing : Fully Furnished



Unit No. : Unit T2 - 8 E, 8th Floor, Tower 2
Size : 2,095 ft²
Rental : MYR 15,713/month | MYR 7.50/ft²
Furnishing : Fully Furnished

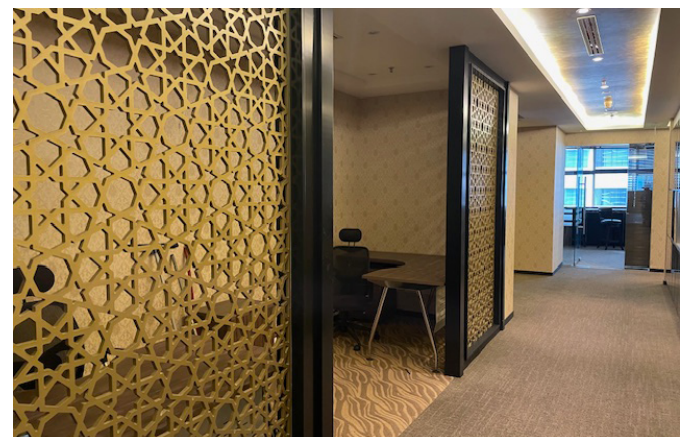


LAYOUT PLAN



From the desk of Amy Ho

Unit No. : Unit T2 - 17th Floor, Tower 2
Size : 8,302 ft²
Rental : MYR 62,265/month | MYR 7.50/ft²
Furnishing : Fully Furnished



AVAILABILITY & RENTAL RATES | PARTLY FURNISHED UNITS

Unit No.	Unit Location	Size ft ²	Rate	Rental, MYR
T1 - 20 D & E	Tower 1, 20 th Floor, Unit D & E	3,459	MYR 7.00	MYR 24,213
T2 - 7 E	Tower 2, 7 th Floor, Unit E	2,095	MYR 7.00	MYR 14,665
T2 - 11 B, C & D	Tower 2, 11 th Floor, Unit B, C & D	3,590	MYR 7.00	MYR 25,130
T2 - 11 E	Tower 2, 11 th Floor, Unit E	2,140	MYR 7.00	MYR 14,980
T2 - 13A - D	Tower 2, 14 th Floor, Unit D	5,640	MYR 7.00	MYR 39,480
T2 - 21A - D	Tower 2, 21 st Floor, Unit D	5,645	MYR 7.00	MYR 39,515

Unit No. : Unit T1-20 D & E, 20th Floor, Tower 1

Size : 3,459 ft²

Rental : MYR 24,213/month | MYR 7.00/ft²

Furnishing : Partly Furnished



Unit No. : Unit T2-7E, 7th Floor, Tower 2
Size : 2,095 ft²
Rental : MYR 14,665/month | MYR 7.00/ft²
Furnishing : Partly Furnished



From the desk of Amy Ho

Unit No. : Unit T2-11 E, 11th Floor, Tower 2
Size : 2,140 ft²
Rental : MYR 14,980/month | MYR 7.00/ft²
Furnishing : Partly Furnished



Unit No. : Unit T2-13A – D, 14th Floor, Tower 2
Size : 5,640 ft²
Rental : MYR 39,480/month | MYR 7.00/ft²
Furnishing : Partly Furnished



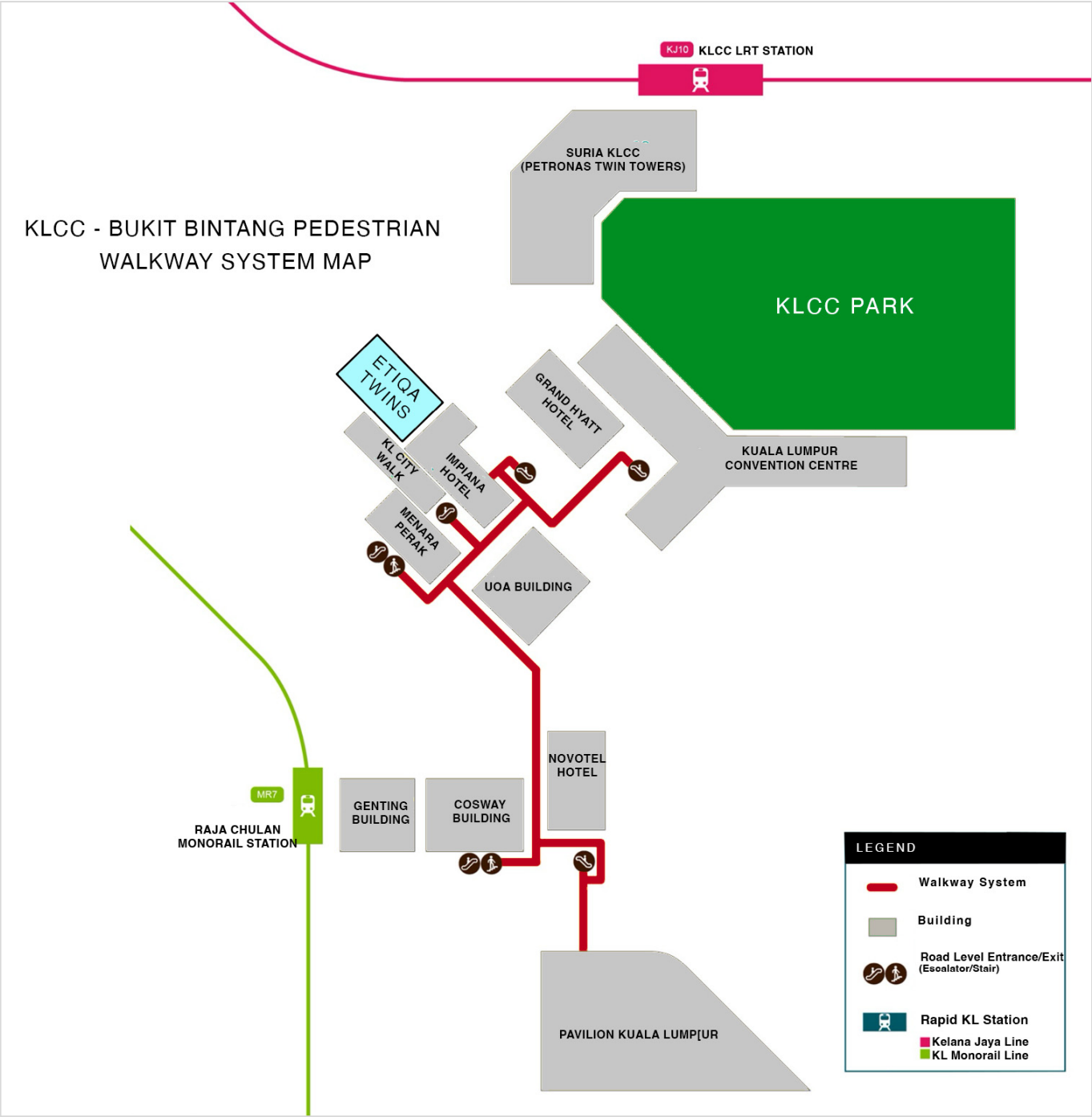
Unit No. : Unit T2-21A – D, 21st Floor, Tower 2
Size : 5,645 ft²
Rental : MYR 39,515/month | MYR 7.00/ft²
Furnishing : Partly Furnished



AVAILABILITY & RENTAL RATES | BARE UNITS

Unit No.	Unit Location	Size ft ²	Rate	Rental, MYR
T1 - 5 A & B	Tower 1, 5 th Floor, Unit A & B	2,715	MYR 6.30	MYR 17,105
T1 - 9	Tower 1, 9 th Floor	8,302	MYR 6.30	MYR 52,303
T1 - 10	Tower 1, 10 th Floor	8,302	MYR 6.30	MYR 52,303
T1 - 16	Tower 1, 16 th Floor	8,302	MYR 6.30	MYR 52,303
T1 - 17	Tower 1, 17 th Floor	8,302	MYR 6.30	MYR 52,303
T1 - 21	Tower 1, 21 st Floor	8,302	MYR 6.30	MYR 52,303
T1 - 25	Tower 1, 25 th Floor	8,302	MYR 6.30	MYR 52,303
T2 - 5A	Tower 2, 5 th Floor, Unit A	2,095	MYR 6.30	MYR 13,199
T2 - 5B	Tower 2, 5 th Floor, Unit B	1,170	MYR 6.30	MYR 7,371
T2 - 5C	Tower 2, 5 th Floor, Unit C	1,200	MYR 6.30	MYR 7,560
T2 - 5D	Tower 2, 5 th Floor, Unit D	1,970	MYR 6.30	MYR 12,411
T2 - 6E	Tower 2, 6 th Floor, Unit E	2,095	MYR 6.30	MYR 13,199
T2 - 7C	Tower 2, 7 th Floor, Unit C	1,632	MYR 6.30	MYR 10,282
T2 - 7D	Tower 2, 7 th Floor, Unit D	1,175	MYR 6.30	MYR 7,403
T2 - 8A1	Tower 2, 8 th Floor, Unit A1	916	MYR 6.30	MYR 5,771
T2 - 10 B & C	Tower 2, 10 th Floor, Unit B & C	1,751	MYR 6.30	MYR 11,031
T2 - 10 D & E	Tower 2, 10 th Floor, Unit D & E	4,000	MYR 6.30	MYR 25,200
T2 - 12 E	Tower 2, 12 th Floor, Unit E	1,350	MYR 6.30	MYR 8,505
T2 - 14 B & C	Tower 2, 14 th Floor, Unit B & C	1,751	MYR 6.30	MYR 11,031
T2 - 14 D - E	Tower 2, 14 th Floor, Unit D & E	3,764	MYR 6.30	MYR 23,713
T2 - 16 C,D & E	Tower 2, 16 th Floor, Unit C, D & E	4,744	MYR 6.30	MYR 29,887
T2 - 18C	Tower 2, 18 th Floor, Unit C	1,195	MYR 6.30	MYR 7,529
T2 - 20	Tower 2, 20 th Floor	8,302	MYR 6.30	MYR 52,303
T2 - 24	Tower 2, 24 th Floor	8,302	MYR 6.30	MYR 52,303
T2 - 26 & 27	Tower 2, 26 th & 27 th Floor (Penthouse)	14,387	MYR 6.30	MYR 90,638

LOCATION MAP



From the desk of Amy Ho

Contact Amy Ho to schedule a viewing today!

Amy Ho

📞 +6012-3321188

✉ amyho@amyho.co

www.amyho.co/commercial-rental

Zack Realty | E(3)0258