

*from the desk of Amy Ho*

## F&B and RETAIL SPACE @ WISMA UOA II

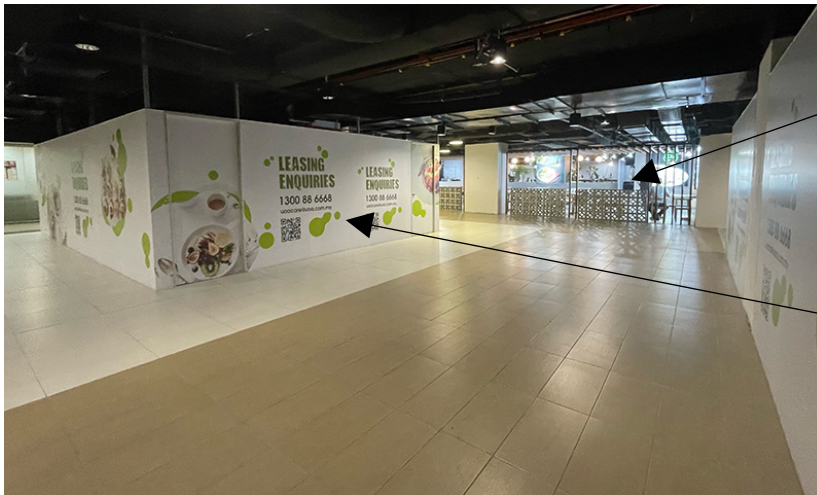
Location : Jalan Pinang, 50450 Kuala Lumpur  
Rental : MYR 4.80 – MYR 8.00 per sq. ft./month  
Available Sizes : 301 – 2,200 sq. ft.

Wisma UOA II is a notable 34-story building offering office suites and three levels of retail space, located next to UOA Centre. The property is directly connected to Suria KLCC, KL Convention Centre, Pavilion Shopping Mall, and key public transit points like LRT & Monorail stations via a Link Bridge, ensuring exceptional accessibility and convenience.

Contact Amy Ho at +6012-332 1188 to schedule a viewing appointment today!

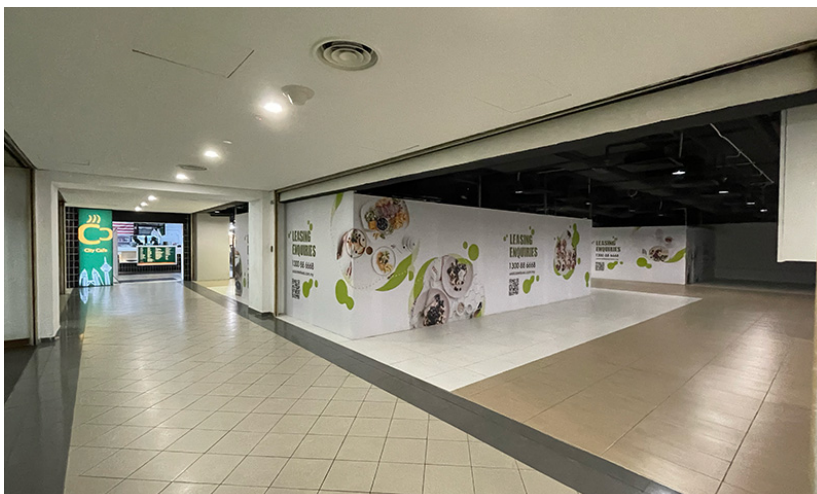
Level	SIZE sq. ft.	RENTAL RATE	RENTAL, MYR	REMARKS
LG FLOOR   FOOD COURT				
LG FLOOR   LGF-01	409	MYR 8.00	MYR 3,272	F&B
LG FLOOR   LGF-02	392	MYR 8.00	MYR 3,136	F&B
LG FLOOR   LGF-03	514	MYR 8.00	MYR 4,112	F&B
LG FLOOR   LGF-3A	514	MYR 8.00	MYR 4,112	F&B
GROUND FLOOR   G7	2,200	MYR 8.00	MYR 17,600	FACING JALAN PINANG
MEZZANINE FLOOR				
UNIT M-2	345	MYR 4.80	MYR 1,656	RETAIL
UNIT M-3	330	MYR 5.00	MYR 1,650	RETAIL
1st FLOOR   LINK BRIDGE				
UNIT 1.9	782	MYR 5.50	MYR 4,301	RETAIL
UNIT 1.9A	301	MYR 7.00	MYR 2,107	F&B
UNIT 1.9B	301	MYR 7.00	MYR 2,107	F&B
UNIT 1.9F	1,946	MYR 5.50	MYR 10,703	RETAIL
UNIT 1.9G	928	MYR 5.50	MYR 5,104	RETAIL

LG FLOOR, FOOD COURT | KIOSK 01- KIOSK 3A | F & B Space



FOODCOURT

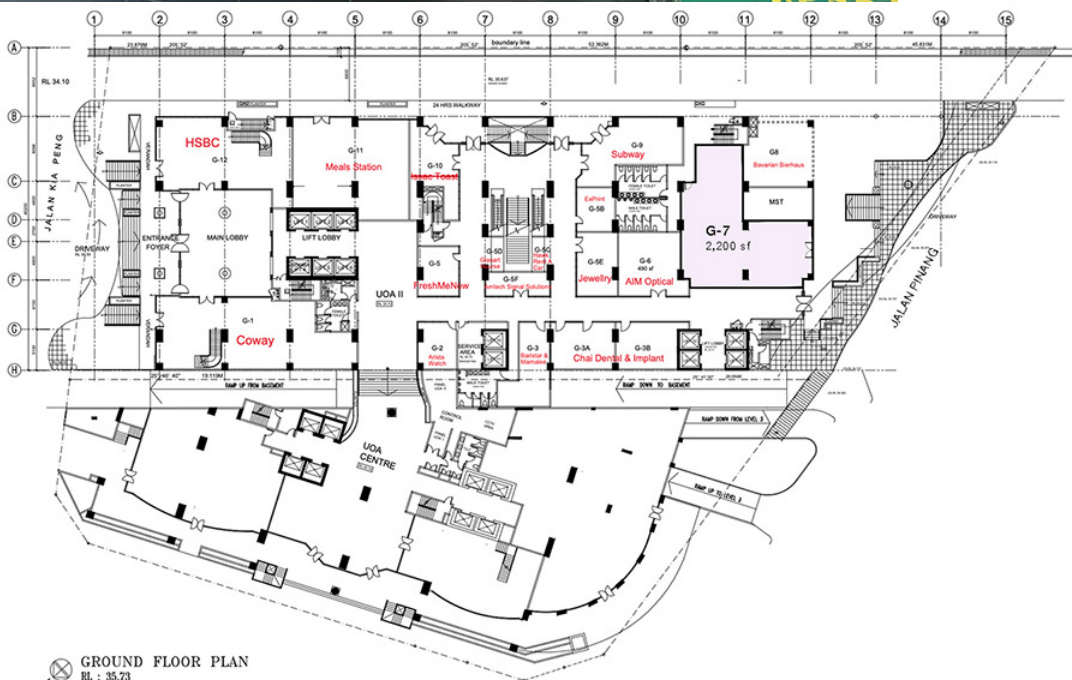
4 x LG FLOOR KIOSKS



from the desk of Amy Ho

GROUND FLOOR | MAIN ROAD FACING

Unit G-7 | Size: 2,200 ft<sup>2</sup> | Rental @ MYR 17,600/month





*from the desk of Amy Ho*

MEZZANINE FLOOR | RETAIL UNITS (Ideal for Nail or Beauty Saloon; General Retail)

Unit M-3 | Size: 330 ft<sup>2</sup> | Rental @ MYR 1,650/month

Unit M-2 | Size: 345 ft<sup>2</sup> | Rental @ MYR 1,656/month

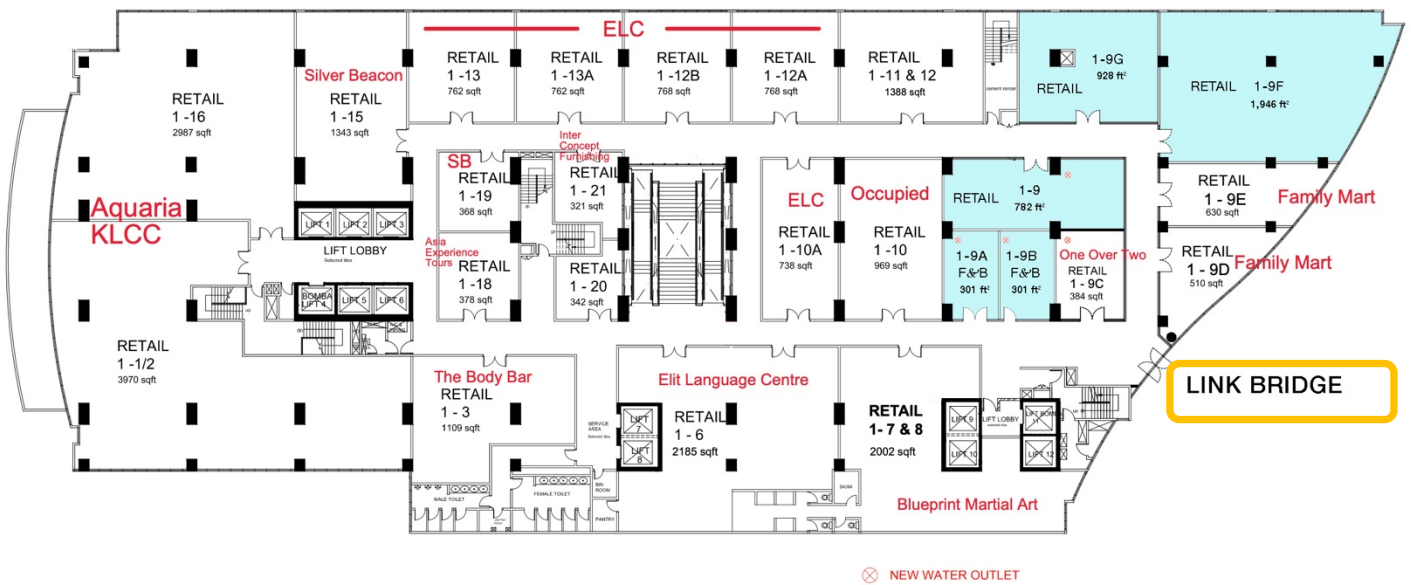


from the desk of Amy Ho

1<sup>st</sup> FLOOR, LINK BRIDGE | F&B AND RETAIL SPACE

- Unit 1-9 | Size: 782 ft<sup>2</sup> | Rental @ MYR 4,301/month
- Unit 1.9A | Size: 301 ft<sup>2</sup> | Rental @ MYR 2,107/month
- Unit 1.9B | Size: 301 ft<sup>2</sup> | Rental @ MYR 2,107/month
- Unit 1.9F | Size: 1,946 ft<sup>2</sup> | Rental @ MYR 10,703/month
- Unit 1.9G | Size: 928 ft<sup>2</sup> | Rental @ MYR 5,104/month

Situated on the 1st floor, these units are nearly adjacent to the Link Bridge, offering high foot traffic.



UNIT 1.19 A & B



LINK BRIDGE to KLCC, PAVILION KL etc





*from the desk of Amy Ho*

WISMA UOA II

