

*From the desk of Amy Ho*

**WISMA MONT KIARA** @ Jalan Kiara, Kuala Lumpur

**MYR 4.50 – MYR 5.00** per sq. ft.

Situated amidst the dynamic intersection of Kuala Lumpur's central business districts and the vibrant Damansara district, Wisma Mont Kiara stands as a 20-storey office tower, seamlessly blending business, and leisure.

**Dynamic Office Spaces:**

- 16 floors dedicated to office spaces offer a canvas for businesses to create layouts tailored to their unique needs.
- Spaces range from a cozy 1,866sf to expansive 11,797sf.
- Fitted with 2' x 4' ceiling board finishes.

**Retail Podium:**

- Four levels host a myriad of retail options, ensuring both convenience and variety.

**Connectivity & Accessibility:**

- Direct links to major highways including the Sprint Highway, NKVE, Penchala Link, Kerinchi Link, and Jalan Duta.

**Features:**

- 24/7 security fortified by CCTV surveillance and card access control with turnstile.
- Centralized air-conditioning with the added benefit of flexible air-conditioning for extended hours.
- Convenient drop-off points, with P2 & P3 zones shared by visitors and a dedicated P3A zone for season pass holders.
- Integrated with 1 Mont Kiara Mall which boasts diverse F&B outlets, retail shops, a supermarket, and is within walking distance to banking facilities.
- Spacious parking options, both in the basement and elevated areas. Applications for P2 Basement & P3A Season Pass can be initiated at the 1MK management office, subject to availability.
- MRT feeder bus routes to Pusat Bandar Damansara MRT enhance the commuting experience.

Please contact Amy Ho @ +6012-3321188 to schedule a viewing appointment today!

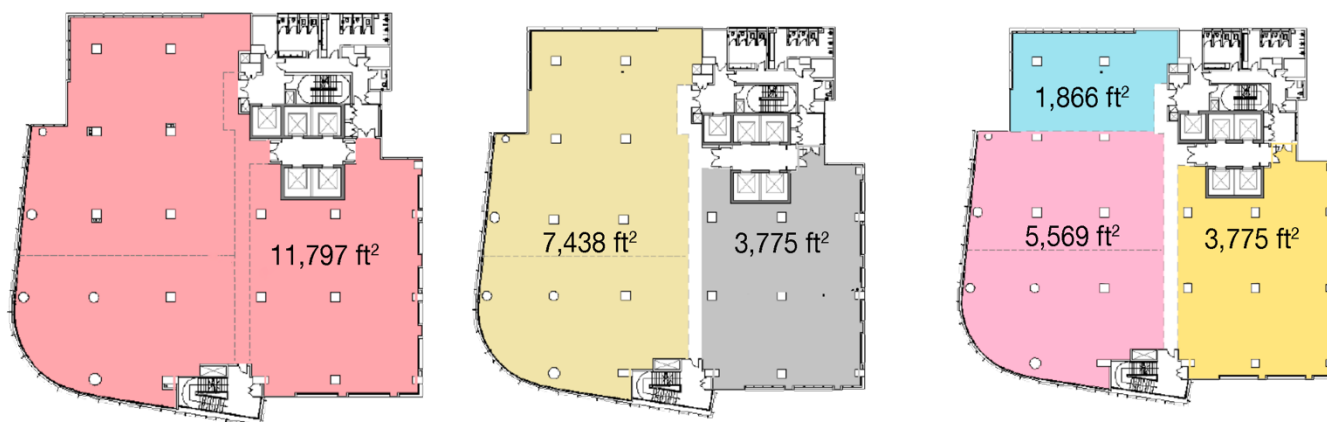
**AVAILABILITY AND RENTAL RATE**

Available Sizes : 1,900 ft<sup>2</sup> – 24,187 ft<sup>2</sup>    Rental : MYR 4.50 – MYR 5.00/feet<sup>2</sup>

Level	Unit No	Furnishing	Built-up feet <sup>2</sup>	Rental/Feet <sup>2</sup>	Rental, MYR
Level 5	L5	Fully Furnished	11,797	MYR 5.00	MYR 58,985
Level 7	L5	Fully Furnished	11,797	MYR 5.00	MYR 58,985
Level 8	L8-01 & 02	Bare	5,569	MYR 4.50	MYR 25,061
Level 9	L9-01 & 02	Bare	7,438	MYR 4.50	MYR 33,471
Level 9	L9-3	Bare	3,775	MYR 4.50	MYR 16,988
Level 10	L10-03	Partially Furnished	3,775	MYR 4.50	MYR 16,988
Level 11	L11-01 & 02	Partially Furnished	5,569	MYR 4.50	MYR 25,061
Level 13	L13	Fully Furnished	11,797	MYR 5.00	MYR 58,985

*From the desk of Amy Ho*

FLOOR PLAN



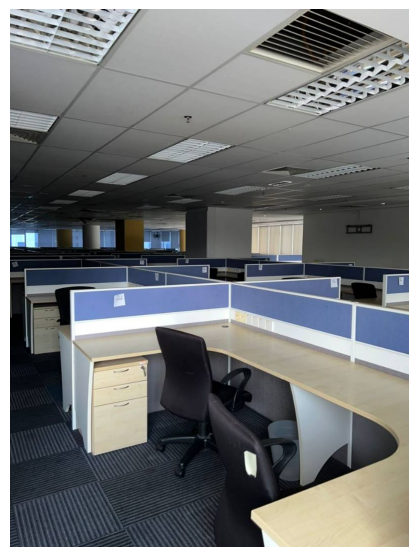
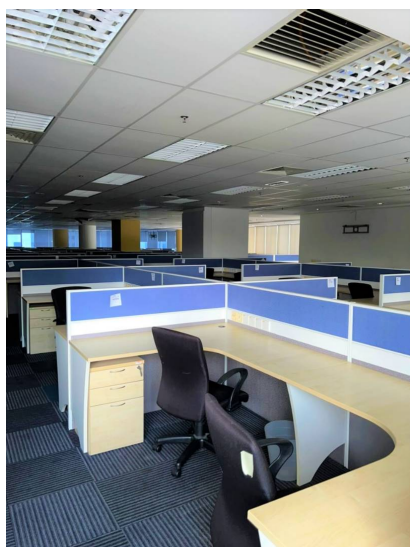
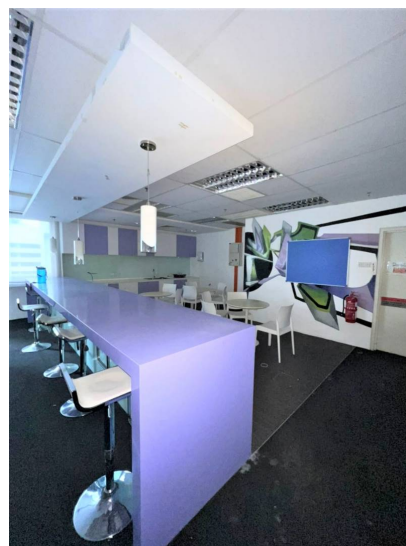
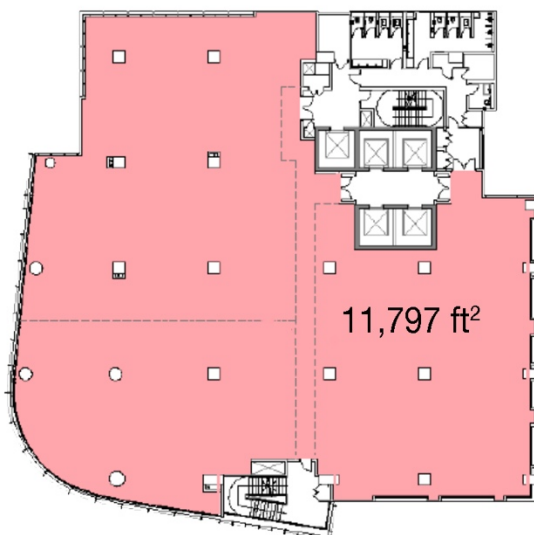
LOBBY AREA



*From the desk of Amy Ho*

## UNIT L5, LEVEL 5

Fully Furnished | Size: 11,797 ft<sup>2</sup> | MYR 5.00 per sq. ft.

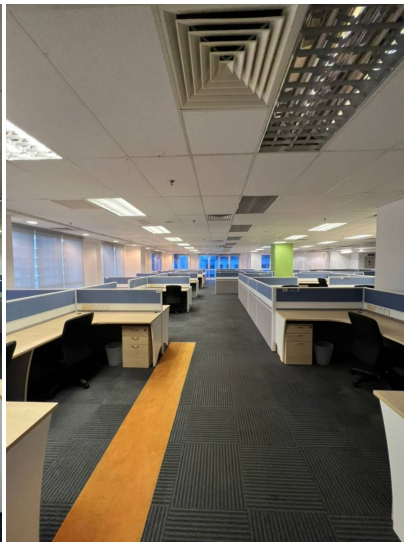
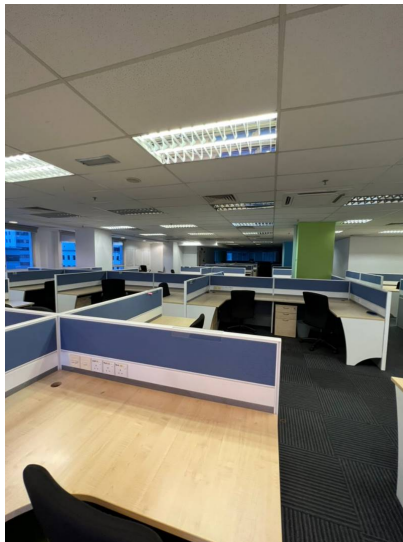
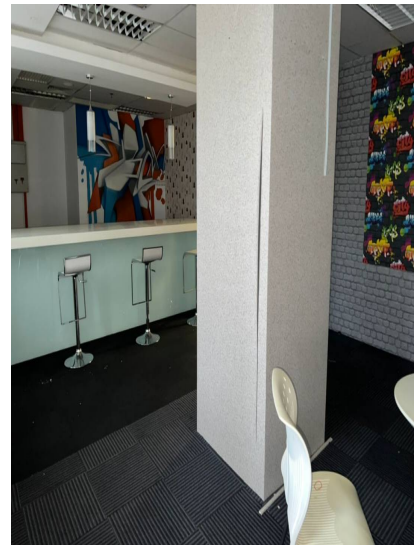
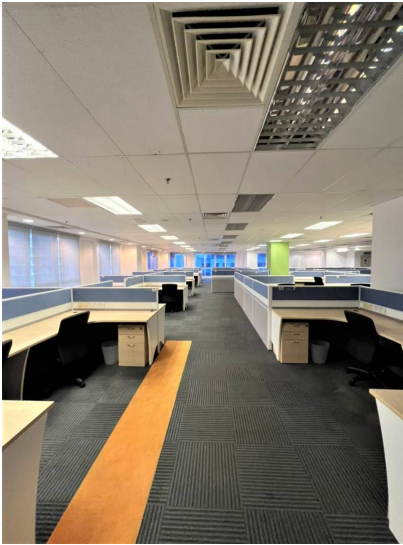
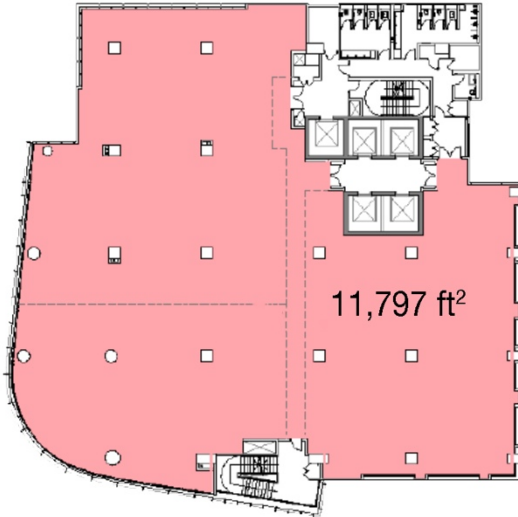




*From the desk of Amy Ho*

## UNIT L5, LEVEL 7

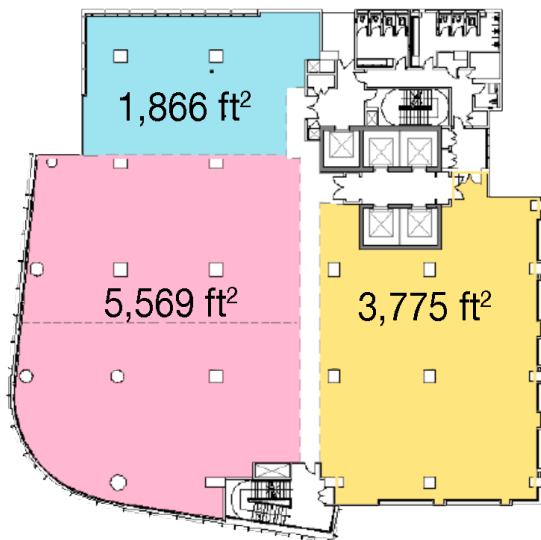
Fully Furnished | Size: 11,797 ft<sup>2</sup> | MYR 5.00 per sq. ft.



*From the desk of Amy Ho*

## UNIT L8-01 & 02, LEVEL 8

Bare Unit | Size: 5,569 ft<sup>2</sup> | MYR 4.50 per sq. ft.

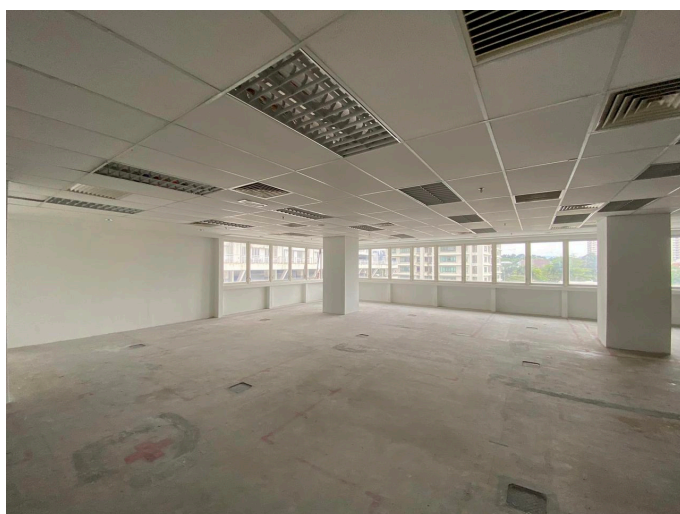
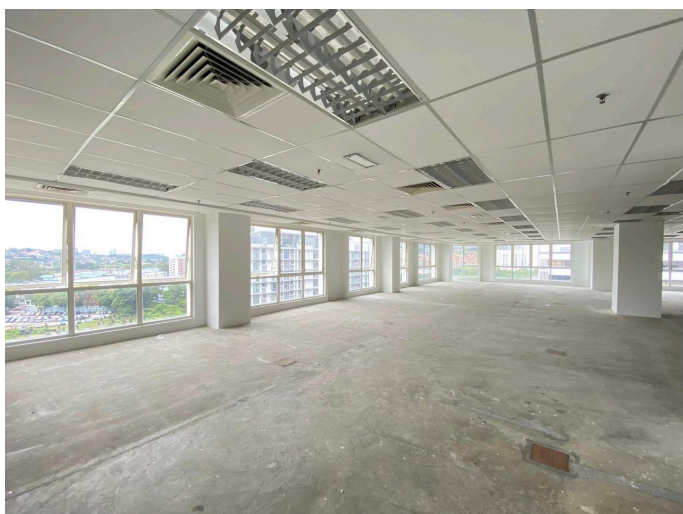
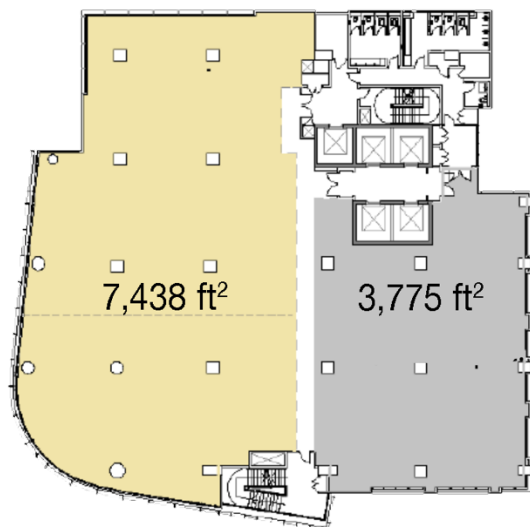




*From the desk of Amy Ho*

## UNIT L9-01 & 02, LEVEL 9

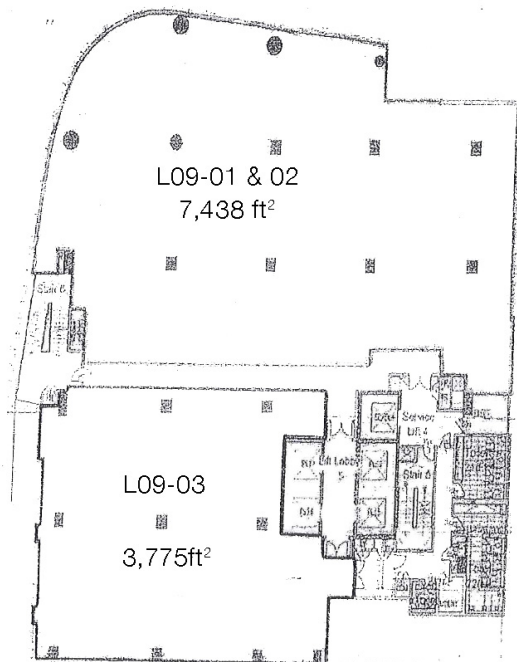
Bare Unit | Size: 7,438 ft<sup>2</sup> | MYR 4.50 per sq. ft.



*From the desk of Amy Ho*

## UNIT L9-03, LEVEL 9

Bare Unit | Size: 3,775 ft<sup>2</sup> | MYR 4.50 per sq. ft.

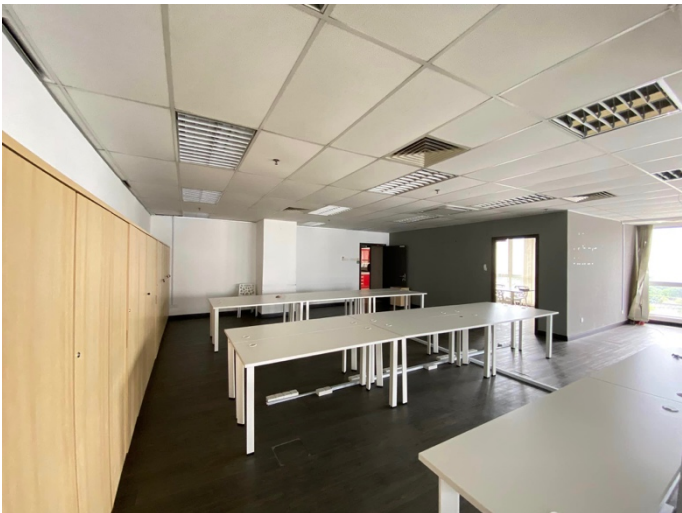
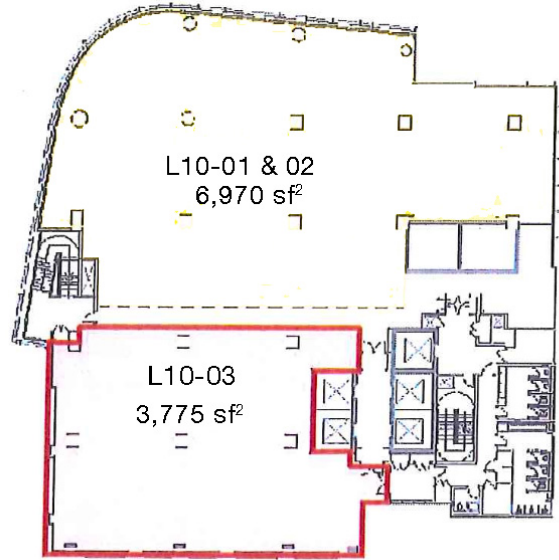




*From the desk of Amy Ho*

## UNIT L10-03, LEVEL 10

Partly Furnished | Size: 3,775 ft<sup>2</sup> | MYR 4.50 per sq. ft.

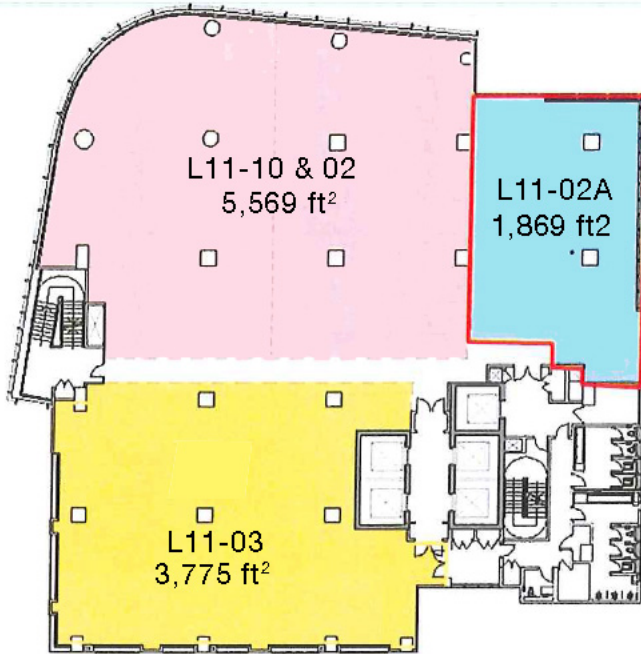




*From the desk of Amy Ho*

## UNIT L11-01, LEVEL 11

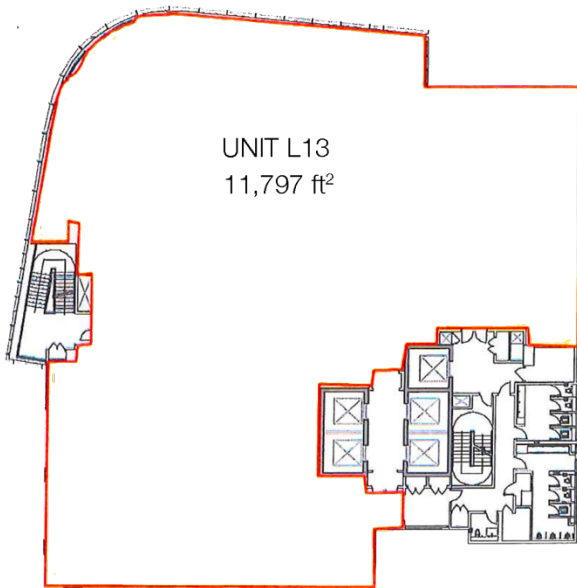
Partly Furnished | Size: 5,569 ft<sup>2</sup> | MYR 4.50 per sq. ft.



*From the desk of Amy Ho*

## UNIT L13, LEVEL 13

Fully Furnished | Size: 11,797 ft<sup>2</sup> | MYR 5.00 per sq. ft.



FLOOR PLAN

