

From the desk of Amy Ho

For SALE | 7,384 sf Lower Ground Floor Office @ PJ Trade Centre, Damansara Perdana PJ

Asking Price : MYR 3,692,000 | MYR 500 psf

Built-up : 7,384 sq. ft.

Location : Block C, LG Floor, PJ Trade Centre

Availability : Open for viewing Monday to Friday during office hours

PJ Trade Centre, a 5.4-acre development nestled in Damansara Perdana, boasts an enviable location close to thriving townships such as TTDI, Bandar Utama, and Mutiara Damansara. Enhanced by excellent connectivity via LDP, Sprint Expressway, Penchala Link, NKVE, and the North-South Expressway, it's the perfect address for your business aspirations.

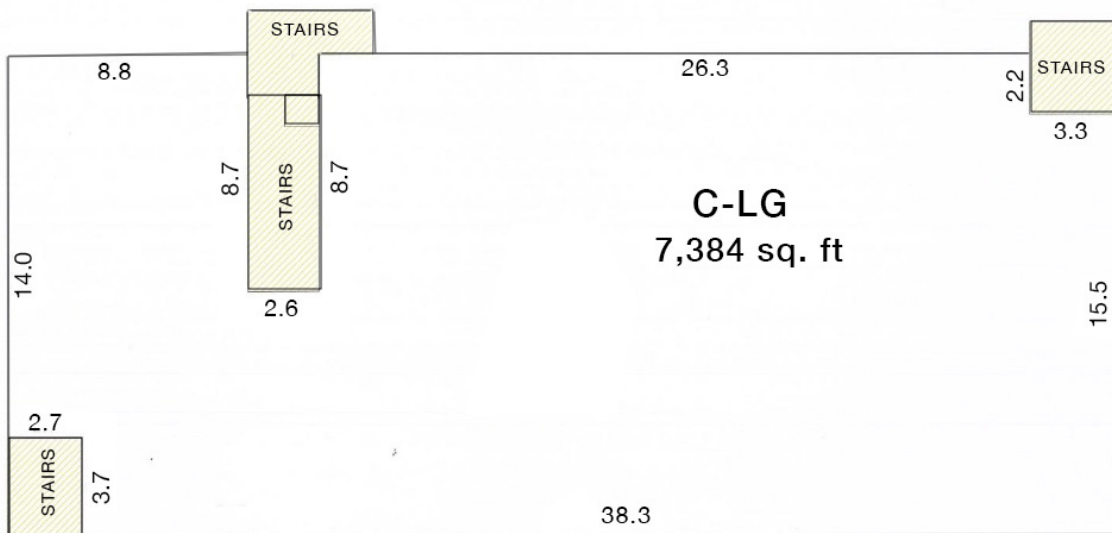
On offer is a stylish lower ground floor unit, conveniently located below the LHDN's office. Its terracotta flooring harmonizes perfectly with its contemporary industrial-style design, lending a unique touch to the overall aesthetic.

Contact Amy Ho @ +6012-3321188 to schedule a viewing appointment today!



PJ TRADE CENTRE
DAMANSARA PERDANA, PETALING JAYA
BLOCK C, LOWER GROUND

FLOOR PLAN
BUILDING M1
TOWER C
LEVEL NB1
PLOT 115
SCALE 1:250



From the desk of Amy Ho



From the desk of Amy Ho

