

*From the desk of Amy Ho*

**FOR RENT: MEZZANNINE FLOOR RETAIL SPACE @ CIMB HUB, JALAN SULTAN ISMAIL**

Rental : MYR 50,844 (MYR 6.00/ft<sup>2</sup>.)

Size : 8,474 ft<sup>2</sup>

Remarks : This prime unit faces Jalan Perak and is perfectly suited for a gym, spa & wellness center, or exclusive restaurant. With a 70% occupancy rate, CIMB Hub is home to over 2,500 staff members, offering an excellent catchment area for your business.

CIMB Hub is a 22-story landmark in Kuala Lumpur's Golden Triangle, featuring 360,000 ft<sup>2</sup> of premium office space and a 3½-level podium annex. The building's strategic location provides easy access to KLCC and Pavilion KL via a sheltered walkway and is within walking distance of key transit options, including the Raja Chulan Monorail, Bukit Bintang MRT, and KLCC LRT stations.

Amenities:

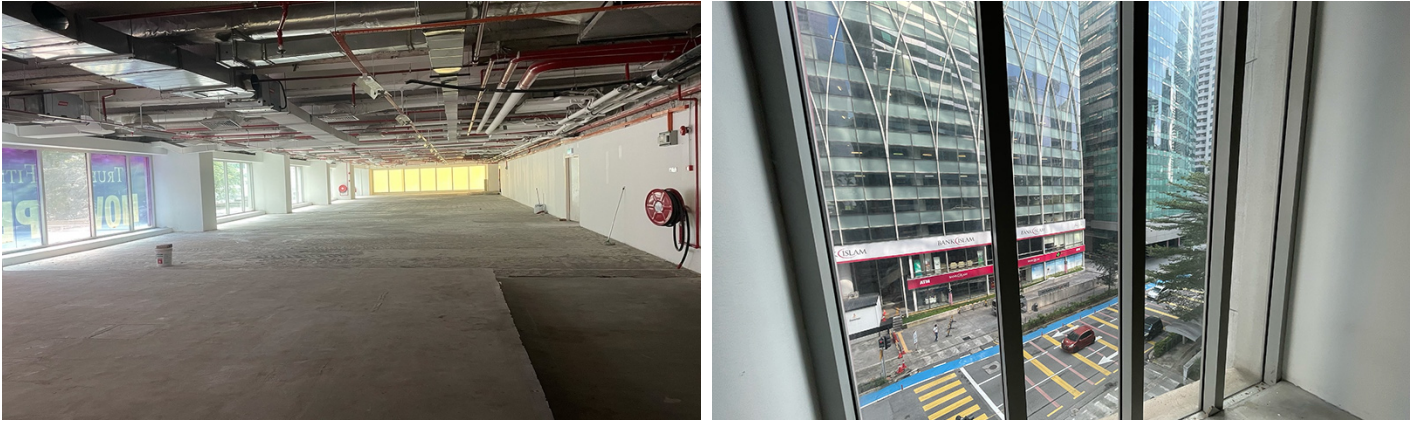
- 634 parking spaces
- Turnstile card access
- Centralized air-conditioning
- Welcoming lobby, cafeteria, coffee kiosks, and surau

Contact Amy Ho at +6012-3321188 to schedule a viewing appointment today!

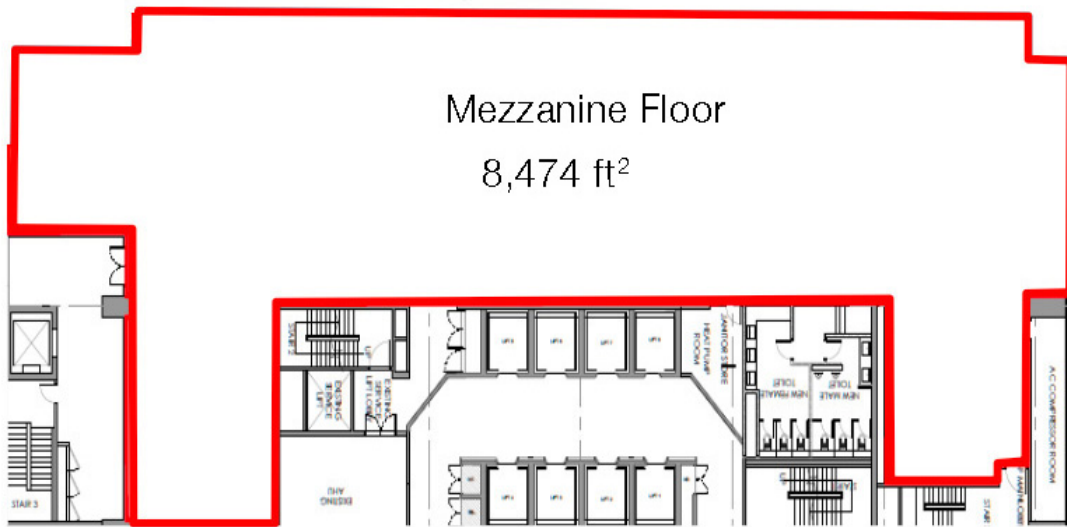


View of CIMB Hub from Jalan Perak

From the desk of Amy Ho



View of Jalan Perak



JALAN SULTAN ISMAIL