

For RENT: PREMIUM CORPORATE OFFICE SPACE @ MENARA PERAK, KLCC

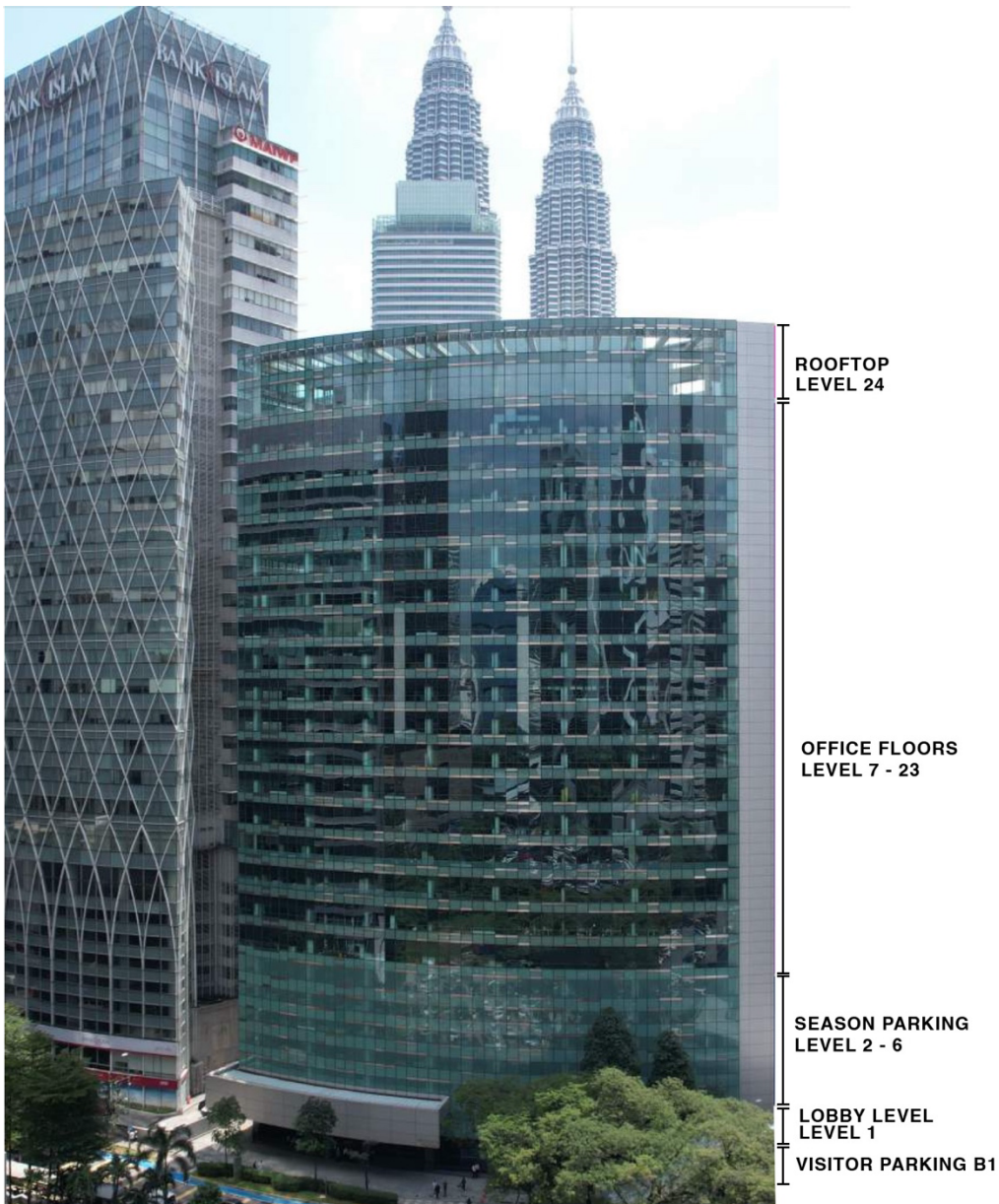
Discover the epitome of corporate luxury at Menara Perak, situated on Jalan Perak in the bustling heart of KL City Centre. This prestigious 24-storey office tower offers a prime location with seamless connectivity to the KLCC-Bukit Bintang Pedestrian Walkway System, ensuring unparalleled accessibility for your business.

Surrounded by iconic Kuala Lumpur landmarks such as the KL Convention Centre, Impiana Hotel, Grand Hyatt Hotel, Suria KLCC Mall, and KLCC Park, this address is the perfect setting for your corporate office.

Public Transport Accessibility:

- 10-minute walk to Raja Chulan Monorail Station
- 14-minute walk to Bukit Bintang MRT Station
- 15-minute walk to Conlay MRT Station
- 20-minute walk to KLCC LRT Station
- 4-minute walk to Green Line KL Free Bus Station

Contact Amy Ho at +6012-332 1188 to schedule a viewing today!



RENTAL RATE & AVAILABILITY

Unit No	Level	Size ft2	Furnishing	Rates, MYR	Rental/month	Page no.
14.01	LEVEL 14	11,233	FULLY FURNISHED	MYR 6.80	MYR 76,384	3
15.01	LEVEL 15	11,233	FULLY FURNISHED	MYR 6.80	MYR 76,384	3
16.01	LEVEL 16	11,233	FULLY FURNISHED	MYR 6.80	MYR 76,384	3
17.01	LEVEL 17	11,233	FULLY FURNISHED	MYR 6.80	MYR 76,384	4
11.03	LEVEL 11	2,300	PARTLY FITTED	MYR 6.50	MYR 14,950	5
13.01	LEVEL 13	11,233	PARTLY FITTED	MYR 6.50	MYR 73,015	5
18.01	LEVEL 18	11,233	PARTLY FITTED	MYR 6.50	MYR 73,015	6
8-01	LEVEL 8	3,209	BARE UNIT	MYR 6.30	MYR 20,217	6
9.02	LEVEL 9	7,417	BARE UNIT	MYR 6.30	MYR 46,727	7
12.02	LEVEL 12	5,069	BARE UNIT	MYR 6.30	MYR 31,935	7
19.01	LEVEL 19	6,512	BARE UNIT	MYR 6.30	MYR 41,026	8
19.03	LEVEL 19	2,072	BARE UNIT	MYR 6.30	MYR 13,054	8

TYPICAL FLOOR PLATE | 11,233 ft²



FULLY FURNISHED UNITS

Unit No. : 14.01	Unit No. : 15.01
Size : 11,233 ft ²	Size : 11,233 ft ²
Rental : MYR 76,384/month	Rental : MYR 76,384/month



FLOOR PLAN

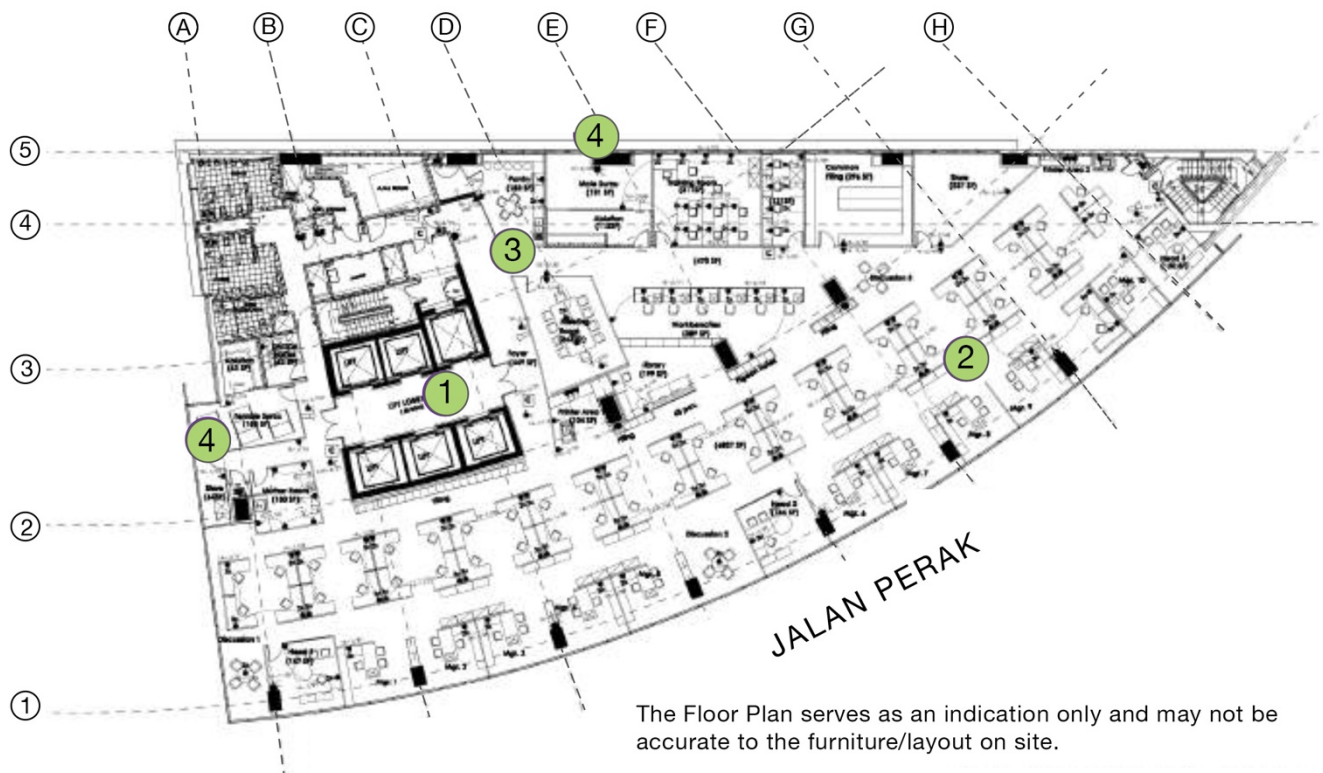
The Floor Plan serves as an indication only and may not be accurate to the furniture/layout on site.

From the desk of Amy Ho

Unit No. : 16.01

Size : 11,233 ft²

Rental : MYR 76,384/month



From the desk of Amy Ho

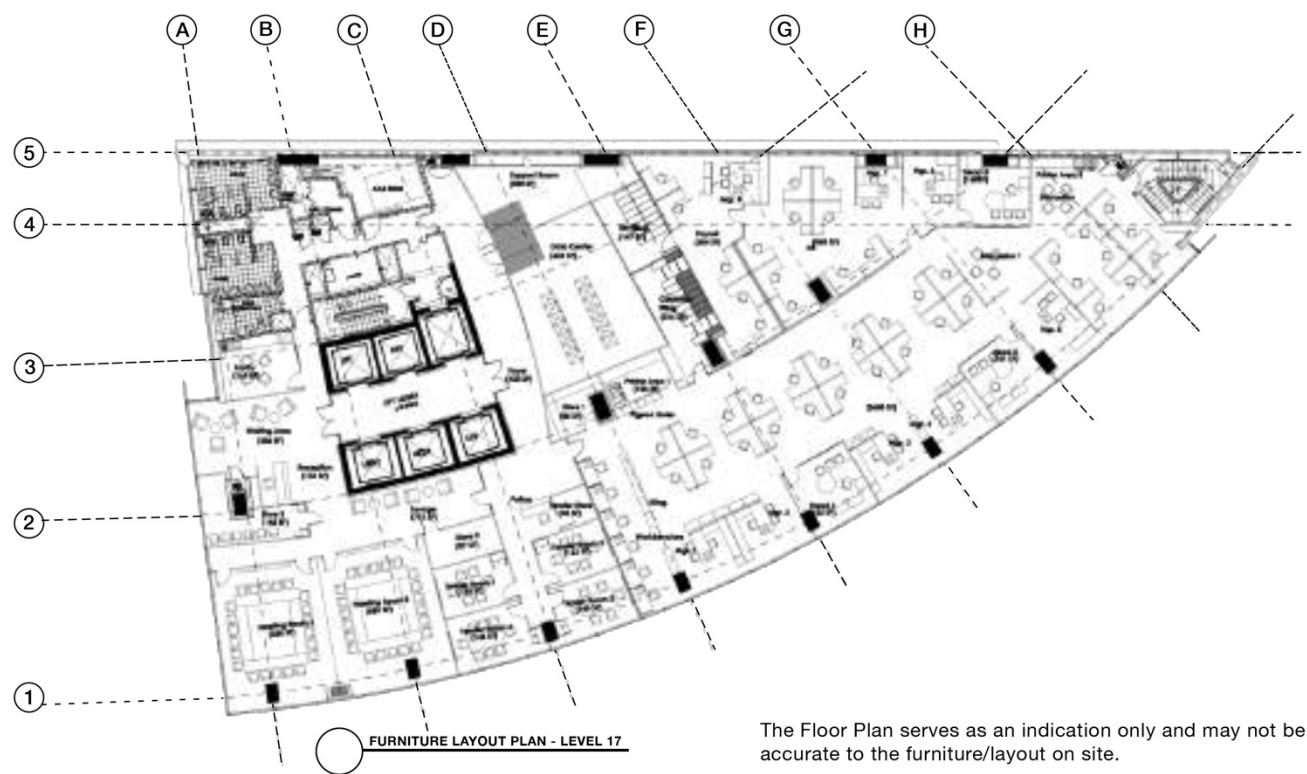
Unit No. : 17.01

Size : 11,233 ft²

Rental : MYR 76,384/month



LEVEL 17 FLOOR PLAN

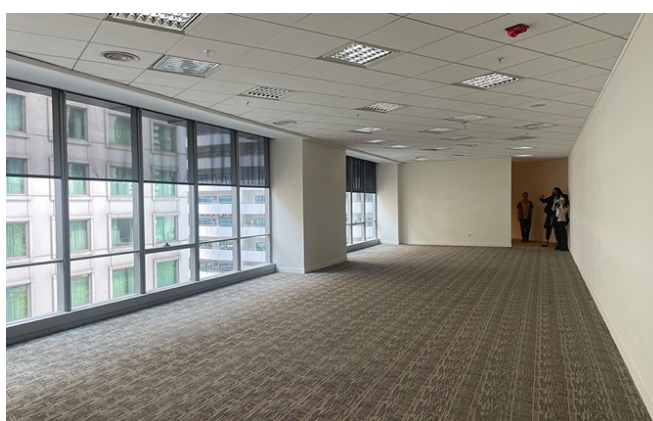
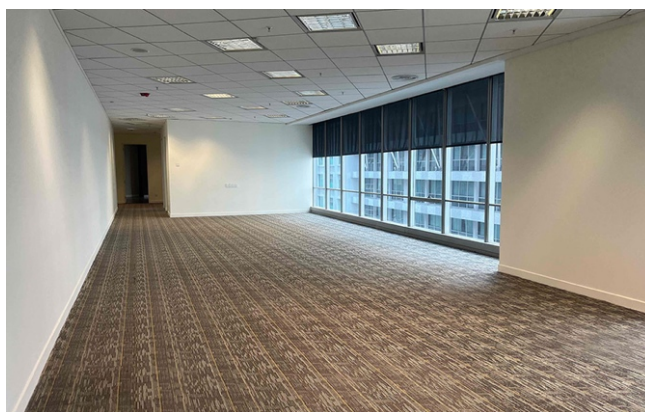


PARTLY FURNISHED UNITS

Unit No. : 11.03

Size : 2,300 ft²

Rental : MYR 14,950/month



FLOOR PLAN



This floor plan serves as an indication of space and is not based on actual measurements.

Unit No. : 13.01

Size : 11,233 ft²

Rental : MYR 73,015/month



FLOOR PLAN



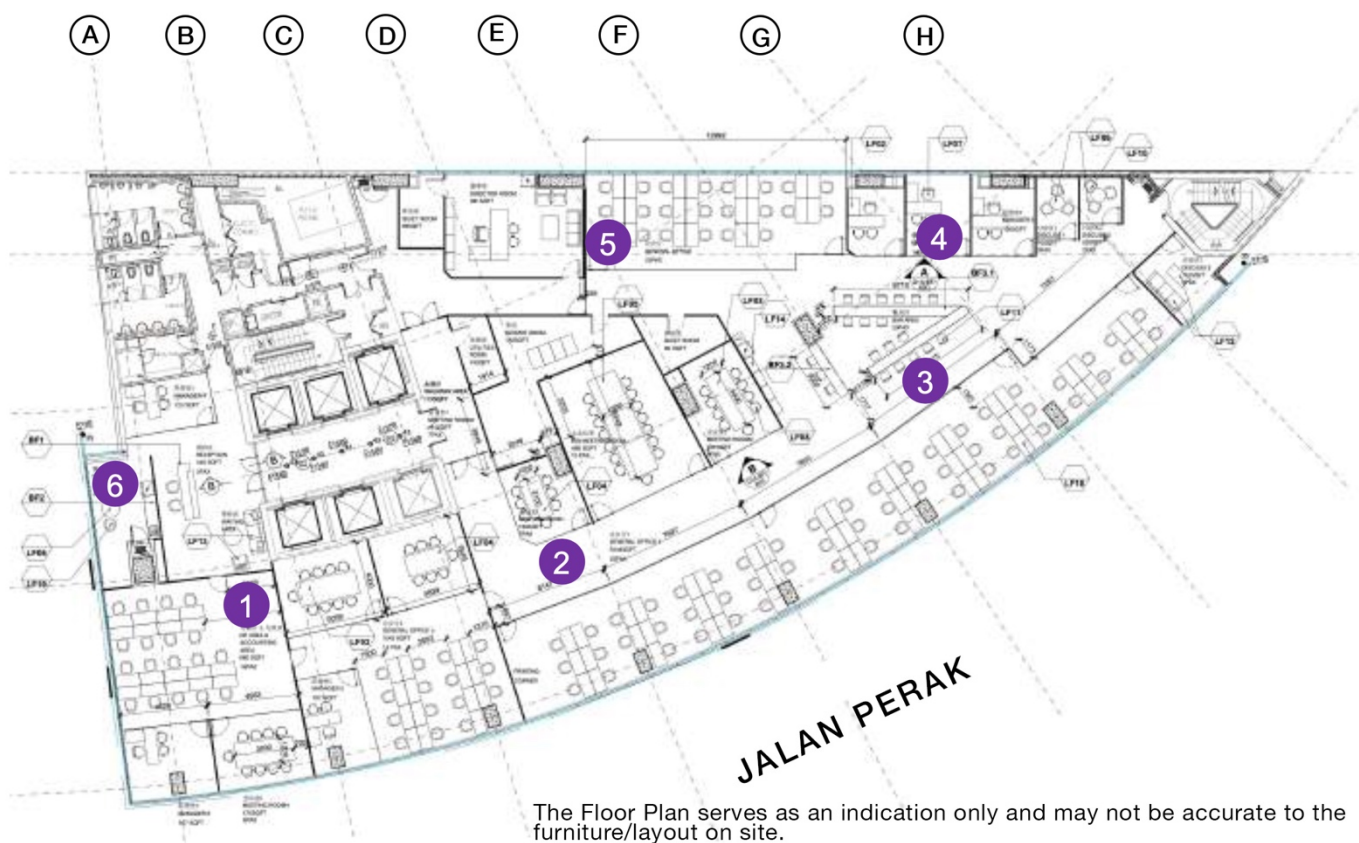
Unit No. : 18.01

Size : 11,233 ft²

Rental : MYR 73,015/month



LEVEL 18 FLOOR PLAN



BARE UNITS

Unit No : 8-01

Size : 3,209 ft²

Rental : MYR 20,217/month



FLOOR PLAN



Unit No. : 9.02

Size : 7,417 ft²

Rental : MYR 46,727/month



FLOOR PLAN



Unit 12.02 | 5,069 ft² | MYR 31,935/month

Unit No. : 12.02

Size : 5,069 ft²

Rental : MYR 31,935/month



FLOOR PLAN



Unit No. : 19.01

Size : 6,512 ft²

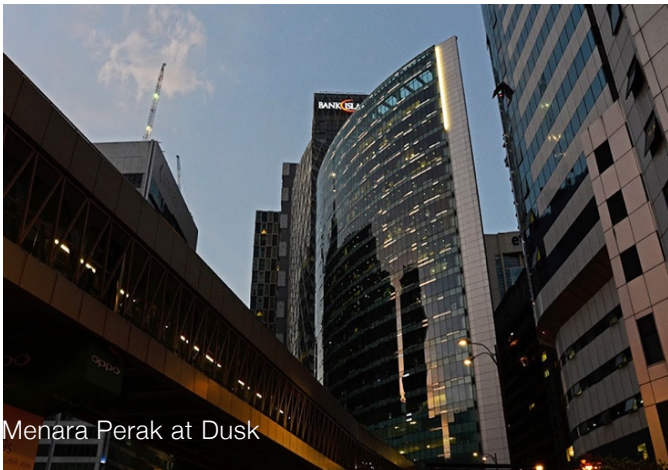
Rental : MYR 41,026/month



Unit No. : 19.03
Size : 2,072 ft²
Rental : MYR 13,054/month



MENARA PERAK



Menara Perak at Dusk



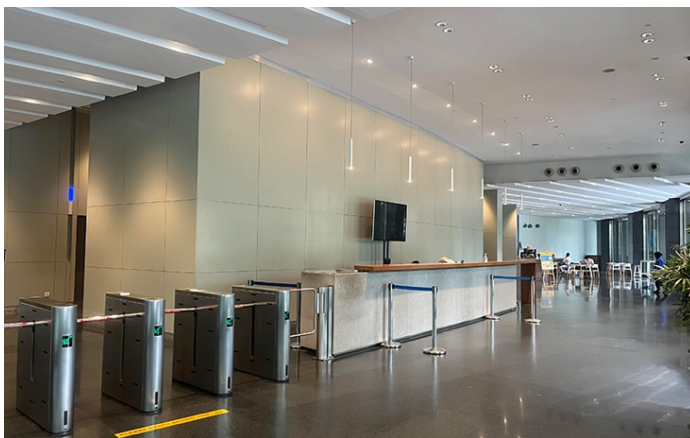
Menara Perak Façade



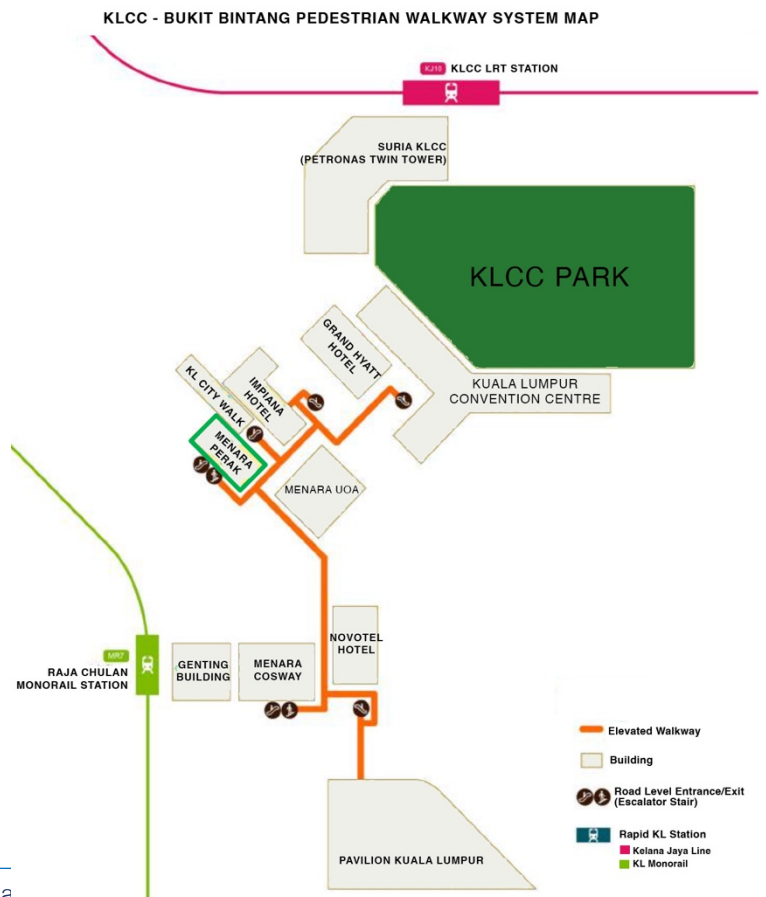
Main Lobby Drop-off



Access to KL Elevated Walkway



Reception with Access Control



RENTAL GUIDELINES

BARE:

- MYR 6.30 psf
- Negotiable based on size/ floor

PARTLY FURNISHED

- MYR 6.50 psf
- Negotiable based on size/ floor

FULLY FURNISHED:

- MYR 6.80 psf
- Negotiable based on size/ floor

CARPARK

FLOATING

- 1 bay for every 1,000 sq ft
- MYR 220.00 per bay/month

RESERVED

- Subject to landlord allocation
- MYR 300 per bay/month

CENTRALIZED AIR-CONDITIONER OPERATION HOURS:

- Monday – Friday: 9:00 am – 6:00 pm
- After Hours: RM 220.00 per hour/floor

INTERNET SERVICE PROVIDER

- MAXIS, UNIFI, TIME

Contact Amy Ho to schedule a viewing today!

Amy Ho

📞 +6012-3321188

✉ amyho@amyho.co

www.amyho.co/commercial-rental

Zack Realty | E(3)0258